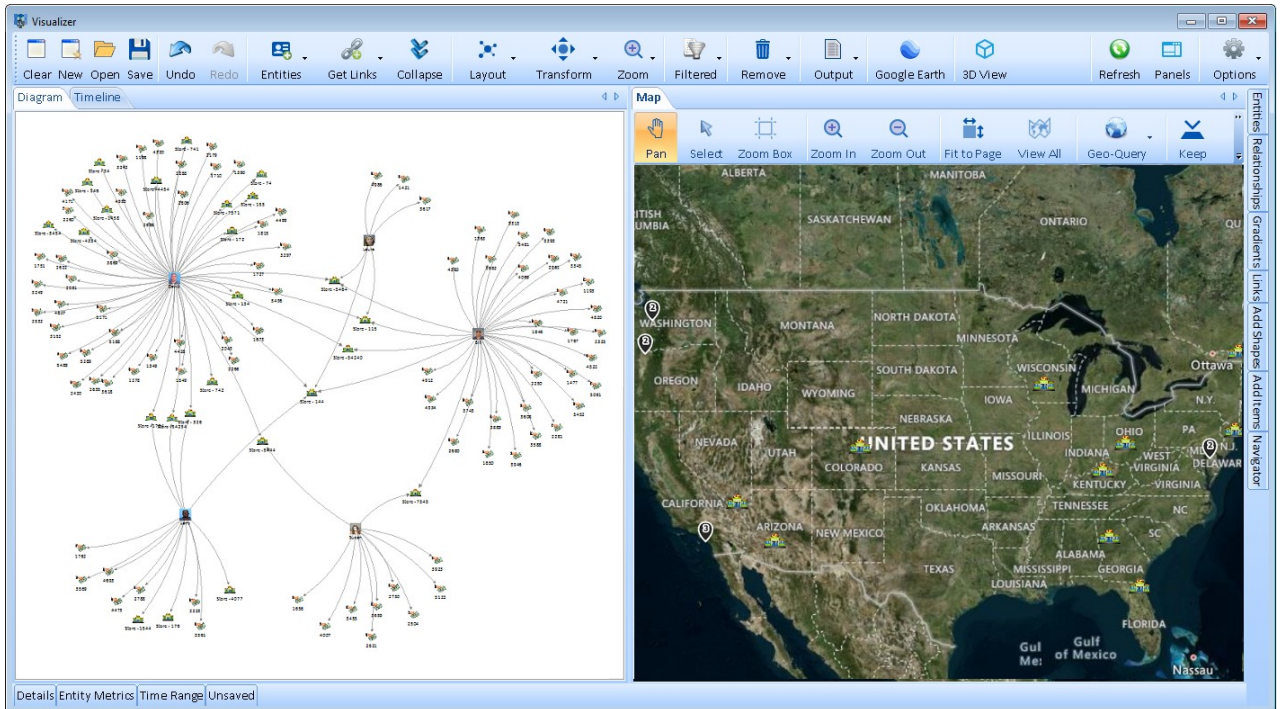


Sentinel Visualizer®

Geospatial Analysis

When you add entities with latitude and longitude to the diagram, they are also added to the Map pane. Sentinel Visualizer supports online and offline maps by placing icons and images of your entities. With an Internet connection, Microsoft Bing Maps let you zoom into detailed global maps. You can also export data directly to Google Earth on your PC. Offline maps support layers with Shape files, ESRI ArcGIS, GeoTIFF, and other providers.

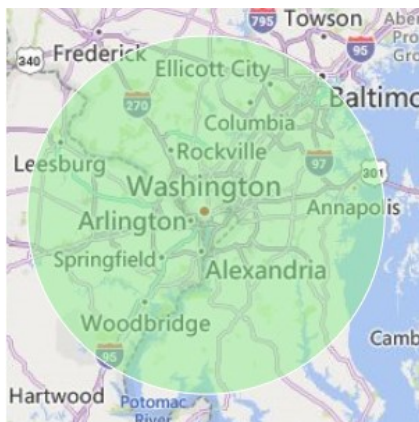


See Your Entities on a Map

Easily see the geographical location of your entities to adds a whole new way to understand your data. See individual icons and groupings if several are close to each other until you zoom in.

Geo Query and Selection

Draw a circle or rectangle on the map to add all the entities located there. Select the entities in an area, then keep or remove them.



Complete Control

The Map toolbar offers powerful tools to manage the map with your data. The Zoom Box adjusts the map to the rectangular area you draw. Fit to Page

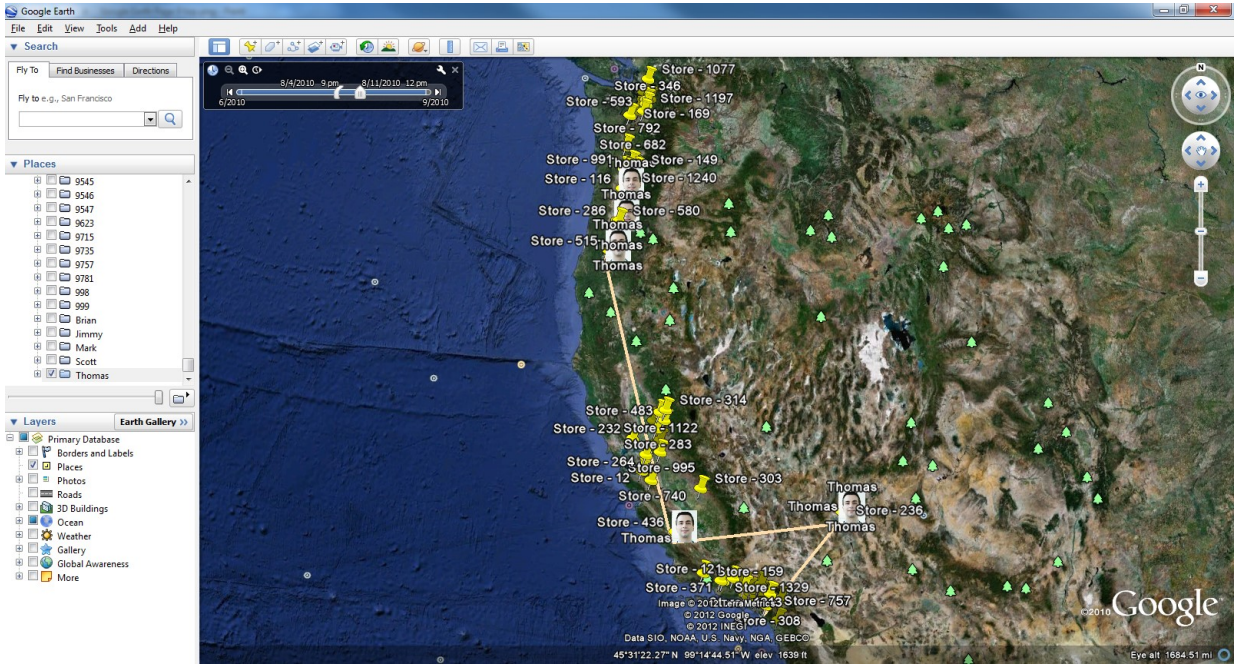


Page adjusts the map to include all your entity locations.



Integration with Google Earth

Send your dataset to Google Earth (free). If your data includes date information, you can also use Google Earth's timeline feature to animate your network over time. Below, the lines indicate the person's travels across locations and time.



Zoom in to drill-down to details about that location. Below, for example, we can see transactions (left) that occurred at a particular location or the actual people (right) that performed those transactions at that location.

